



**ADE SERIES**  
3" Deep Well  
Submersible Pump

## APPLICATIONS

- Water supply from tank, reservoir, and well
- Residential for various purposes
- Domestic water supply

## FEATURES

- Excellent resistance against corrosion with fully stainless steel casing; and cast stainless steel pump discharge outlet and bracket
- Greater tolerance against sand through sophisticated hydraulic design and the use of engineered thermoplastic material for impeller that has superior wear resistance properties.
- Protection against water hammering with built-in check valve.
- Specially designed motor winding to operate within wide range of voltage supply.
- Control box protect motor against overload.

## SPECIFICATION

- Flow: up to 5.4m<sup>3</sup>/hr
- Head up to 150m at 50Hz
- Motor input voltage range: 170V to 230V, Single Phase
- Motor type: Rewindable Oil-filled motor

## Available on Request

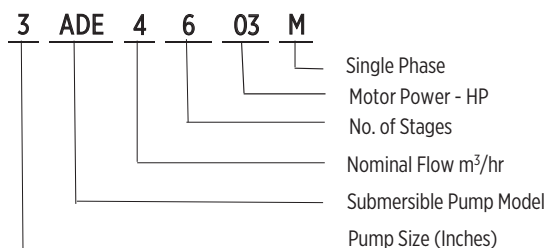
- Customized lead length
- 3 Phase motor
- Different pump discharge sizes

## MATERIAL OF CONSTRUCTION

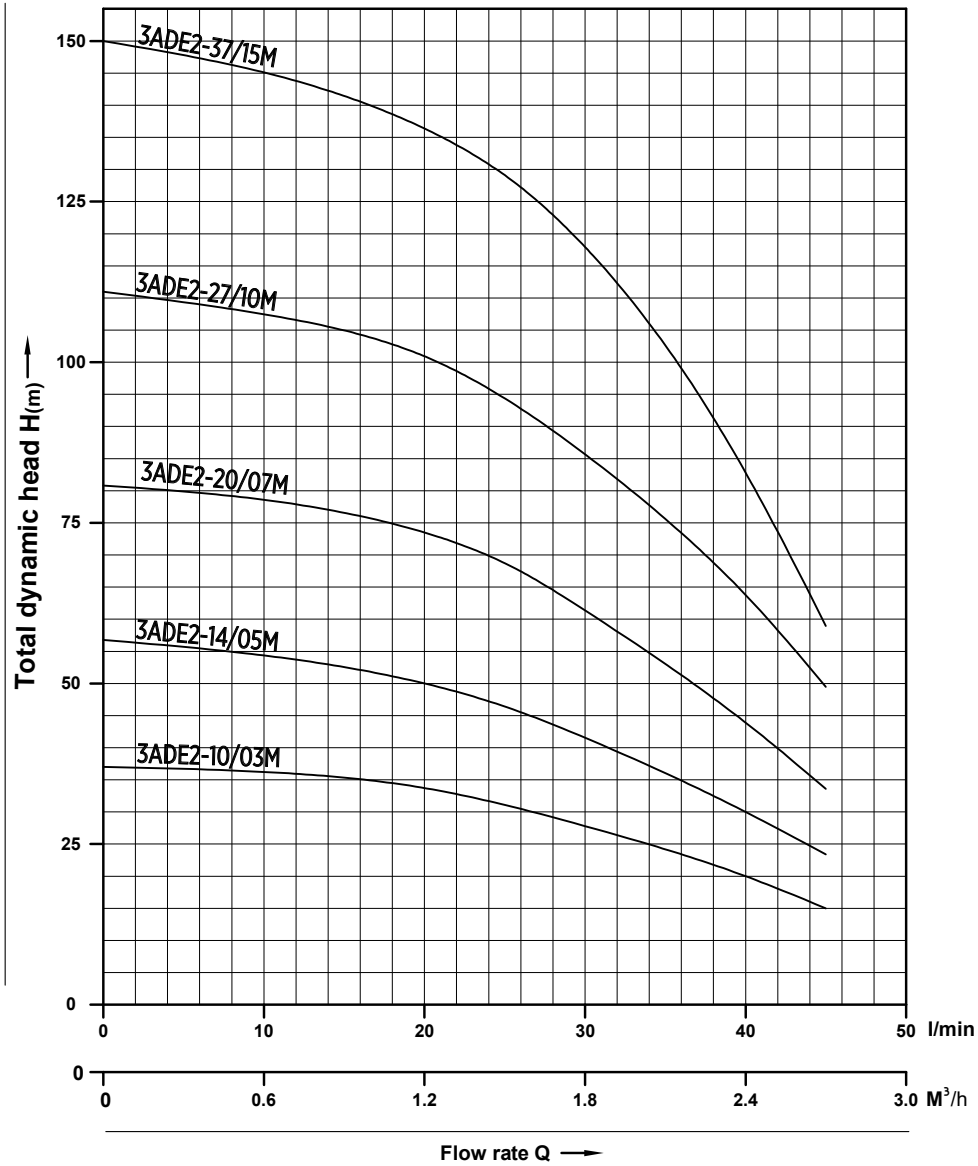
| Components        | Materials            |
|-------------------|----------------------|
| <b>PUMP</b>       |                      |
| Discharge Head    | Cast Stainless Steel |
| Motor Bracket     | Cast Stainless Steel |
| Check Valve       | Plastic              |
| Pump Shell        | Stainless Steel      |
| Cable Guard       | Stainless Steel      |
| Pump Shaft        | Stainless Steel      |
| Impeller          | Thermoplastic        |
| Diffuser          | Thermoplastic        |
| Strainer          | Stainless Steel      |
| <b>MOTOR</b>      |                      |
| Motor Outer Shell | Stainless Steel      |

## PRODUCT IDENTIFICATION

3ADE4-6/03M

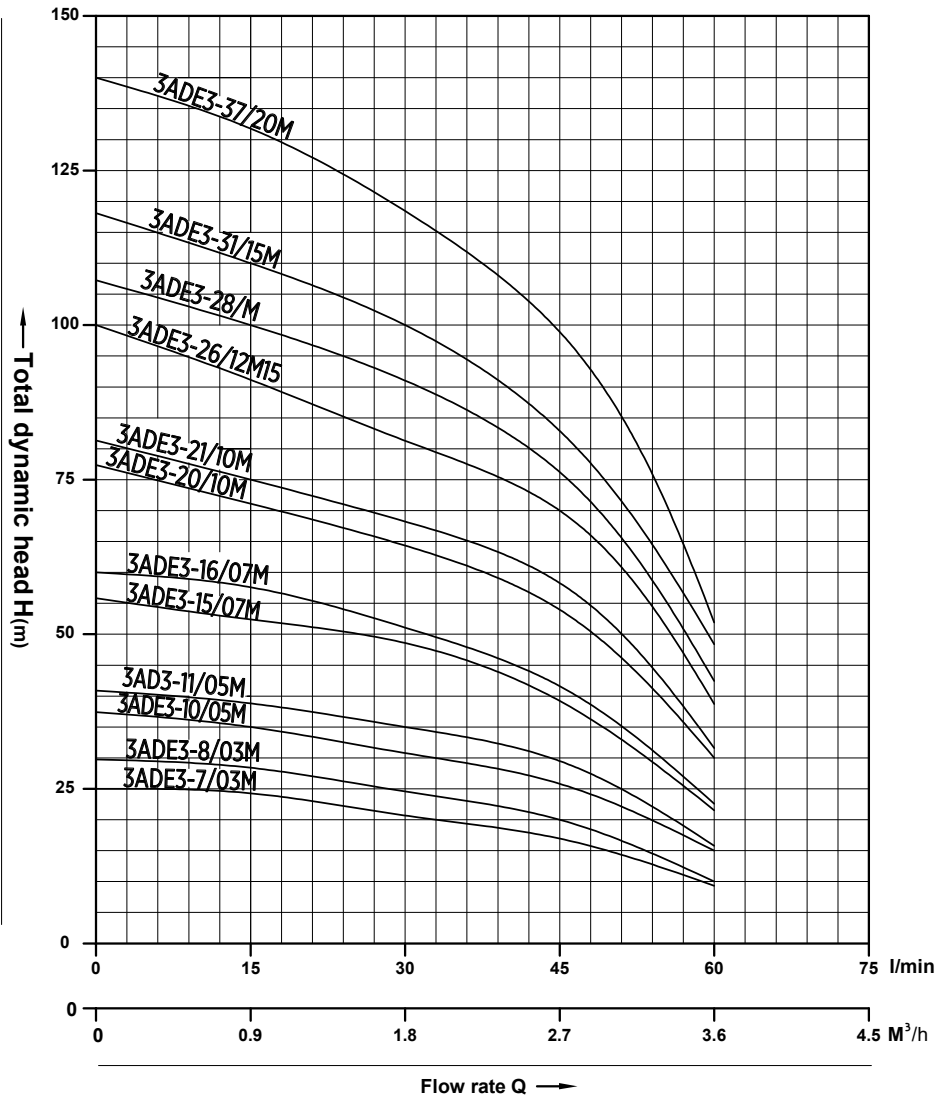


## PERFORMANCE CURVE 50Hz



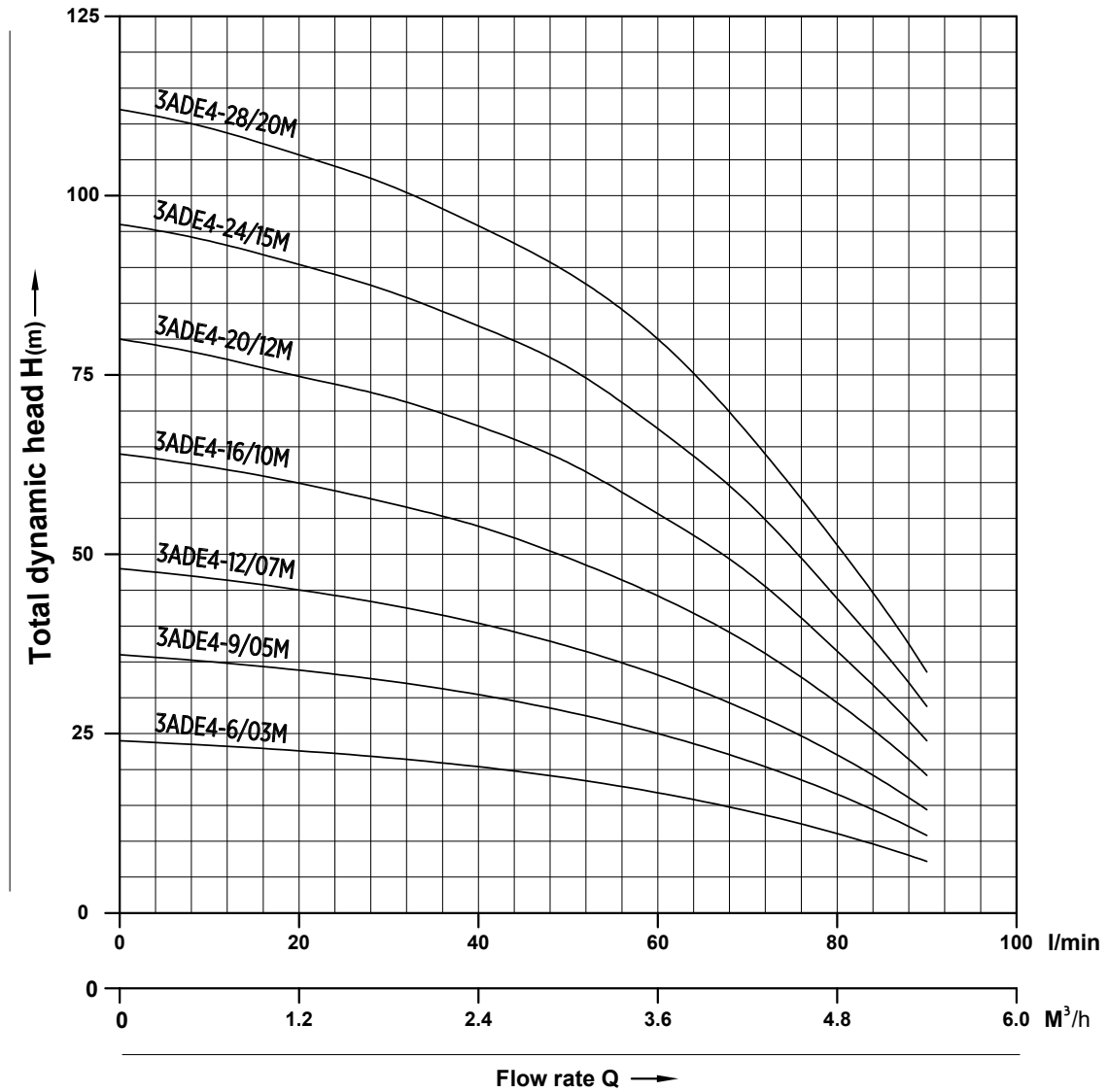
| Model        | Motor Power |      | DELIVERY $N \approx 2850r/min$ |         |     |     |     |     |     |     |     |     |     |     |
|--------------|-------------|------|--------------------------------|---------|-----|-----|-----|-----|-----|-----|-----|-----|-----|-----|
|              | kW          | HP   | Q                              | $m^3/h$ | 0   | 0.3 | 0.6 | 0.9 | 1.2 | 1.5 | 1.8 | 2.1 | 2.4 | 2.7 |
|              |             |      |                                | $l/min$ | 0   | 5   | 10  | 15  | 20  | 25  | 30  | 35  | 40  | 45  |
| 3ADE2-10/03M | 0.25        | 0.33 | H (m)                          | 38      | 37  | 36  | 35  | 35  | 31  | 28  | 24  | 20  | 15  |     |
| 3ADE2-14/05M | 0.37        | 0.5  |                                | 57      | 56  | 54  | 53  | 50  | 47  | 42  | 37  | 30  | 23  |     |
| 3ADE2-20/07M | 0.55        | 0.75 |                                | 81      | 80  | 78  | 75  | 74  | 68  | 61  | 53  | 43  | 34  |     |
| 3ADE2-27/10M | 0.75        | 1    |                                | 111     | 109 | 107 | 104 | 103 | 95  | 85  | 75  | 64  | 49  |     |
| 3ADE2-37/15M | 1.1         | 1.5  |                                | 150     | 147 | 144 | 141 | 136 | 129 | 117 | 101 | 83  | 59  |     |

## PERFORMANCE CURVE 50Hz



| Model        | Motor Power |      | DELIVERY $N \approx 2850r/min$ |         |     |     |     |     |     |     |     |     |     |     |    |     |     |
|--------------|-------------|------|--------------------------------|---------|-----|-----|-----|-----|-----|-----|-----|-----|-----|-----|----|-----|-----|
|              | kW          | HP   | Q                              | $m^3/h$ | 0   | 0.3 | 0.6 | 0.9 | 1.2 | 1.5 | 1.8 | 2.1 | 2.4 | 2.7 | 3  | 3.3 | 3.6 |
|              |             |      |                                | l/min   | 0   | 5   | 10  | 15  | 20  | 25  | 30  | 35  | 40  | 45  | 50 | 55  | 60  |
| 3ADE3-7/03M  | 0.25        | 0.33 | H(m)                           | 25      | 25  | 24  | 24  | 23  | 22  | 21  | 19  | 18  | 17  | 14  | 12 | 9   |     |
| 3ADE3-8/03M  | 0.25        | 0.33 |                                | 29      | 29  | 28  | 27  | 26  | 25  | 24  | 22  | 21  | 20  | 17  | 14 | 10  |     |
| 3ADE3-10/05M | 0.37        | 0.5  |                                | 37      | 36  | 35  | 35  | 34  | 33  | 31  | 31  | 29  | 26  | 22  | 19 | 15  |     |
| 3ADE3-11/05M | 0.37        | 0.5  |                                | 41      | 40  | 39  | 38  | 37  | 36  | 35  | 34  | 32  | 29  | 24  | 21 | 16  |     |
| 3ADE3-15/07M | 0.55        | 0.75 |                                | 56      | 55  | 54  | 53  | 52  | 50  | 48  | 46  | 44  | 39  | 36  | 30 | 22  |     |
| 3ADE3-16/07M | 0.55        | 0.75 |                                | 60      | 59  | 58  | 57  | 55  | 53  | 51  | 49  | 47  | 42  | 38  | 32 | 23  |     |
| 3ADE3-20/10M | 0.75        | 1    |                                | 77      | 75  | 73  | 71  | 70  | 67  | 64  | 62  | 60  | 54  | 48  | 41 | 30  |     |
| 3ADE3-21/10M | 0.75        | 1    |                                | 81      | 79  | 77  | 75  | 73  | 70  | 67  | 65  | 63  | 57  | 50  | 43 | 31  |     |
| 3ADE3-26/12M | 0.92        | 1.25 |                                | 100     | 97  | 95  | 92  | 90  | 86  | 82  | 80  | 78  | 70  | 61  | 53 | 38  |     |
| 3ADE3-28/15M | 1.1         | 1.5  |                                | 107     | 105 | 102 | 100 | 95  | 93  | 91  | 89  | 84  | 76  | 63  | 56 | 43  |     |
| 3ADE3-31/15M | 1.1         | 1.5  |                                | 118     | 115 | 112 | 110 | 105 | 103 | 100 | 98  | 93  | 83  | 69  | 62 | 47  |     |
| 3ADE3-37/20M | 1.5         | 2    |                                | 140     | 138 | 136 | 132 | 127 | 123 | 118 | 113 | 110 | 99  | 88  | 75 | 52  |     |

## PERFORMANCE CURVE 50Hz



| Model        | Motor Power |      | DELIVERY $N \approx 2850 \text{r/min}$ |                   |     |     |     |     |     |    |     |     |     |     |
|--------------|-------------|------|--|-------------------|-----|-----|-----|-----|-----|----|-----|-----|-----|-----|
|              | kW          | HP   | Q                                      | m <sup>3</sup> /h | 0   | 0.6 | 1.2 | 1.8 | 2.4 | 3  | 3.6 | 4.2 | 4.8 | 5.4 |
|              |             |      |  | l/min             | 0   | 10  | 20  | 30  | 40  | 50 | 60  | 70  | 80  | 90  |
| 3ADE4-6/03M  | 0.25        | 0.33 | H(m)                                   | 24                | 24  | 23  | 23  | 22  | 20  | 18 | 15  | 11  | 7   |     |
| 3ADE4-9/05M  | 0.37        | 0.5  |  | 36                | 35  | 34  | 34  | 32  | 30  | 26 | 22  | 17  | 8   |     |
| 3ADE4-12/07M | 0.55        | 0.75 |  | 48                | 47  | 46  | 46  | 44  | 41  | 36 | 30  | 23  | 13  |     |
| 3ADE4-16/10M | 0.75        | 1    |  | 64                | 63  | 62  | 61  | 59  | 55  | 49 | 41  | 32  | 18  |     |
| 3ADE4-20/12M | 0.92        | 1.25 |  | 80                | 79  | 78  | 76  | 73  | 68  | 61 | 51  | 40  | 23  |     |
| 3ADE4-24/15M | 1.1         | 1.5  |  | 96                | 94  | 93  | 91  | 86  | 80  | 71 | 60  | 46  | 29  |     |
| 3ADE4-28/20M | 1.5         | 2    |  | 112               | 111 | 110 | 107 | 103 | 96  | 85 | 74  | 55  | 34  |     |

## WEIGHT & DIMENSION

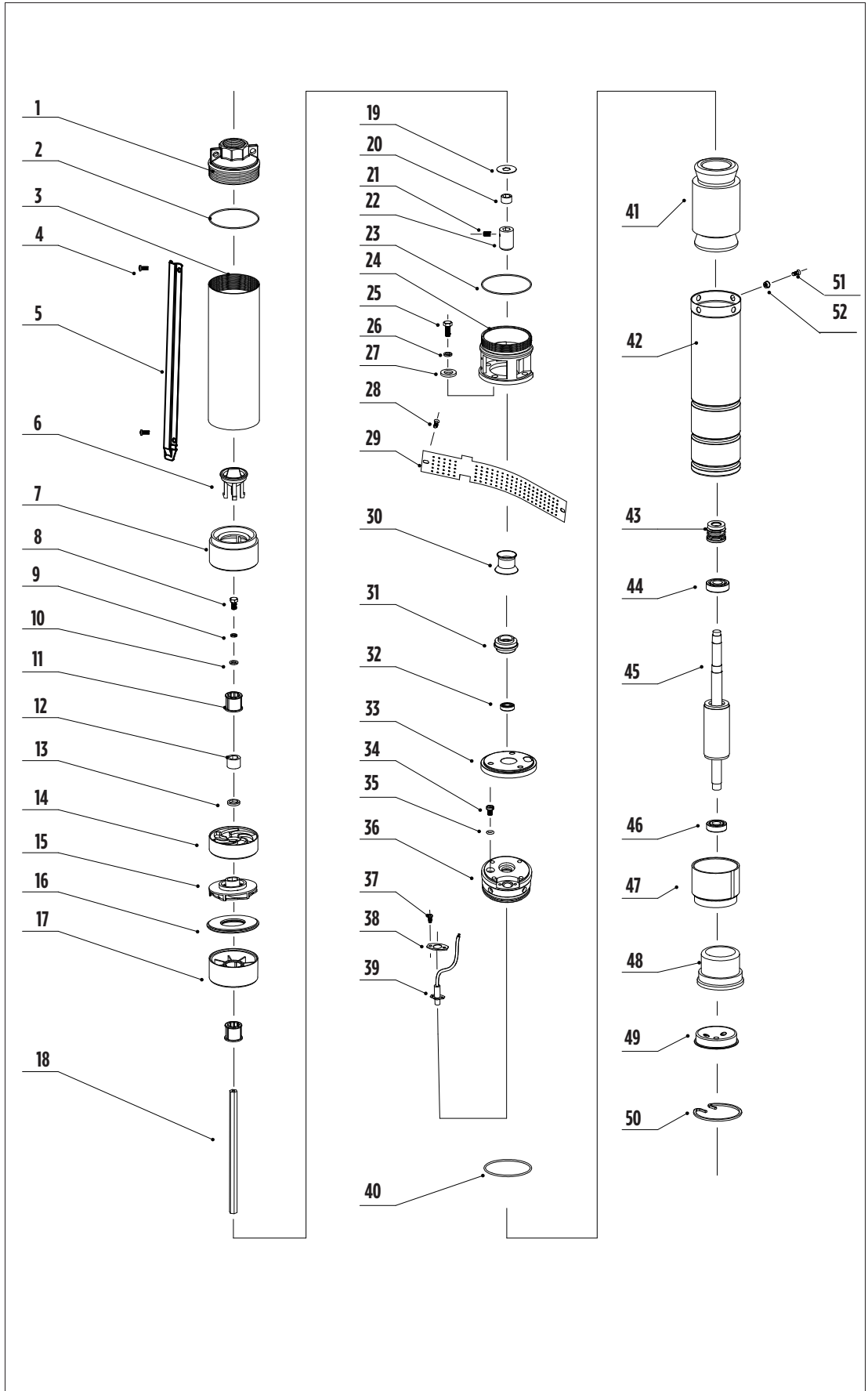
| Pump Model   | Pump & Motor    |             |
|--------------|-----------------|-------------|
|              | Dimension (cm)  | Weight (kg) |
| 3ADE2-10/03M | 78 x 11 x 11.5  | 8.30        |
| 3ADE2-14/05M | 94 x 11 x 11.5  | 10.00       |
| 3ADE2-20/07M | 113 x 11 x 11.5 | 10.96       |
| 3ADE2-27/10M | 137 x 11 x 11.5 | 13.72       |
| 3ADE2-37/15M | 171 x 11 x 11.5 | 17.22       |

| Pump Model   | Pump & Motor    |             |
|--------------|-----------------|-------------|
|              | Dimension (cm)  | Weight (kg) |
| 3ADE3-7/03M  | 74 x 11 x 11.5  | 7.90        |
| 3ADE3-10/05M | 85 x 11 x 11.5  | 9.00        |
| 3ADE3-15/07M | 105 x 11 x 11.5 | 11.30       |
| 3ADE3-20/10M | 124 x 11 x 11.5 | 13.55       |
| 3ADE3-28/15M | 156 x 11 x 11.5 | 16.85       |

| Pump Model   | Pump & Motor    |             |
|--------------|-----------------|-------------|
|              | Dimension (cm)  | Weight (kg) |
| 3ADE4-6/03M  | 74 x 11 x 11.5  | 7.68        |
| 3ADE4-9/05M  | 86 x 11 x 11.5  | 9.18        |
| 3ADE4-12/07M | 102 x 11 x 11.5 | 11.16       |
| 3ADE4-16/10M | 120 x 11 x 11.5 | 13.32       |
| 3ADE4-20/12M | 134 x 11 x 11.5 | 14.62       |
| 3ADE4-24/15M | 154 x 11 x 11.5 | 16.66       |
| 3ADE4-28/20M | 172 x 11 x 11.5 | 18.90       |

# PARTS LIST

| No. | Description              |
|-----|--------------------------|
| 1   | Discharge Head           |
| 2   | "O" Ring                 |
| 3   | Pump Sleeve/ Casing      |
| 4   | Screw                    |
| 5   | Cable Guard              |
| 6   | Check Valve              |
| 7   | Valve Seat               |
| 8   | Screw                    |
| 9   | Spring Washer            |
| 10  | Shim                     |
| 11  | Shaft Sleeve             |
| 12  | Shaft Sleeve             |
| 13  | Gasket                   |
| 14  | Diffuser                 |
| 15  | Impeller                 |
| 16  | Diffuser Cover           |
| 17  | Intermediate Support     |
| 18  | Pump Shaft               |
| 19  | Shim                     |
| 20  | Hex Gasket               |
| 21  | Hex Socket Screws        |
| 22  | Coupling                 |
| 23  | "O" ring                 |
| 24  | Motor Adapter            |
| 25  | Stud                     |
| 26  | Spring Washer            |
| 27  | Shim                     |
| 28  | Screw                    |
| 29  | Strainer                 |
| 30  | Sand Slinger             |
| 31  | Sand Proof Seat          |
| 32  | Anti-sand Ceramic Washer |
| 33  | Cover                    |
| 34  | Screw                    |
| 35  | "O" Ring                 |
| 36  | Top End Bell             |
| 37  | Screw                    |
| 38  | Pressing Plate           |
| 39  | Lead                     |
| 40  | "O" Ring                 |
| 41  | Stator                   |
| 42  | Motor Outer Shell        |
| 43  | Mechanical Seal          |
| 44  | Deep Groove Ball Bearing |
| 45  | Rotor                    |
| 46  | Deep Groove Ball Bearing |
| 47  | Bearing Seat             |
| 48  | Rubber Diaphragm         |
| 49  | End Cover                |
| 50  | Retaining Ring           |
| 51  | Screw                    |
| 52  | Locking Ring             |





COVERCO is a long recognized Italian manufacturer of high quality submersible motors with more than 50 years of experience in the industry. FRANKLIN ELECTRIC acquired COVERCO in year 2002, further strengthening COVERCO R&D capability, production capacity, sales and service networks, delivering expanded product portfolio around the globe.

Franklin Electric (SEA) Pte Ltd

ASEAN|Bangladesh|Pakistan|Sri Lanka

17 Changi Business Park Central 1 | #06-05 Honeywell Building | Singapore 486073

Phone. +65 6789 6865 - Fax. +65 6789 0155



[www.franklinwatersea.com](http://www.franklinwatersea.com)

