



***FPS***



**ISC Series**  
Double Suction Split Case Centrifugal Pumps

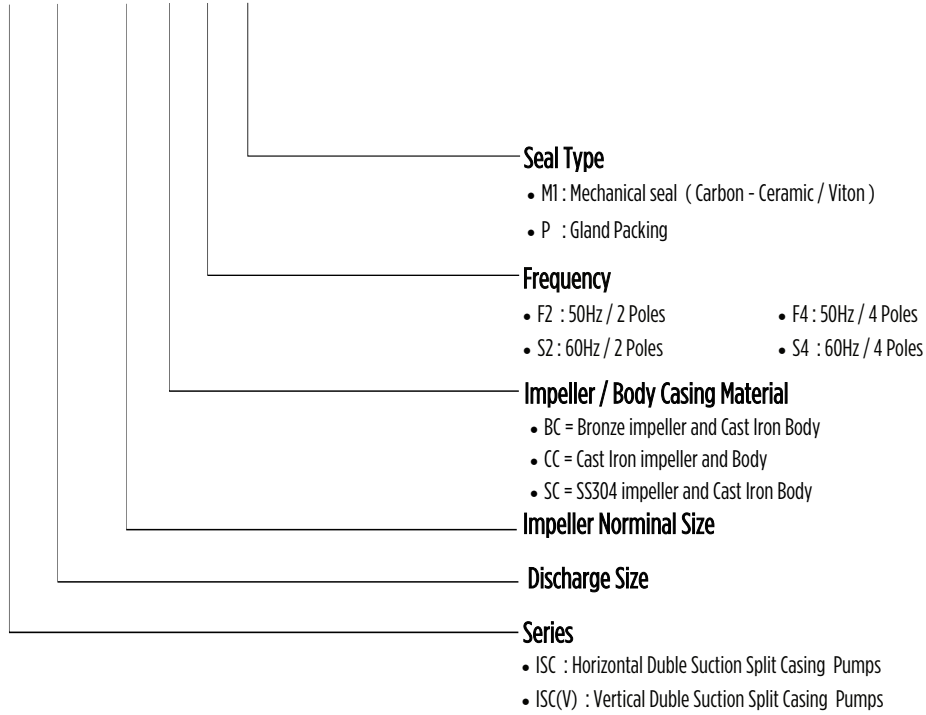
# INDEX

Pump identification code .....	2
<b>ISC SERIES .....</b>	<b>3</b>
APPLICATIONS.....	3
FEATURES.....	3
ISC SERIES .....	3
EXPLODE VIEW & PART LIST.....	4
FAMILY CURVE.....	5
DIMENSION.....	6



## PUMP IDENTIFICATION CODE

ISC 80 - 370 BC F2 M1



## APPLICATIONS

- Air Conditioner Water Circulation
- Heating Pipe Network System
- Building Water Supply
- Power Plants
- Fire Fighting
- Marine and Mining Industry
- Irrigation and Drainage of Pump Stations

## FEATURES

The Double Suction Split Casing Centrifugal pumps are designed to pump clean liquids, without abrasives and suspended solids, non-explosive environments.

Operating Temp. : Up to 85 °C (Standard) ; 105 °C (On Request)  
Working Pressure : Up to 1.6 MPa (standard) ; 2.5 MPa (on Request)

## ISC Series

Horizontal split case, double suction, single stage impeller with between bearing design pump. **ISC pump** is highly efficient, smooth operation with minimal vibration. The pump can be mounted either in horizontal or vertical position.

### Flange

- DIN 2501 FF ( Standard)
- ANSI B16.5 ( On Request )
- Size : DN80 - DN 400.

### Material

- Casing : Cast Iron / Ductile Iron
- Impeller : Cast Iron / Bronze / SS304 / SS316
- Shaft : SS420
- Shaft Seal : Mechanical Seal / Gland Packing

### Pump Specification

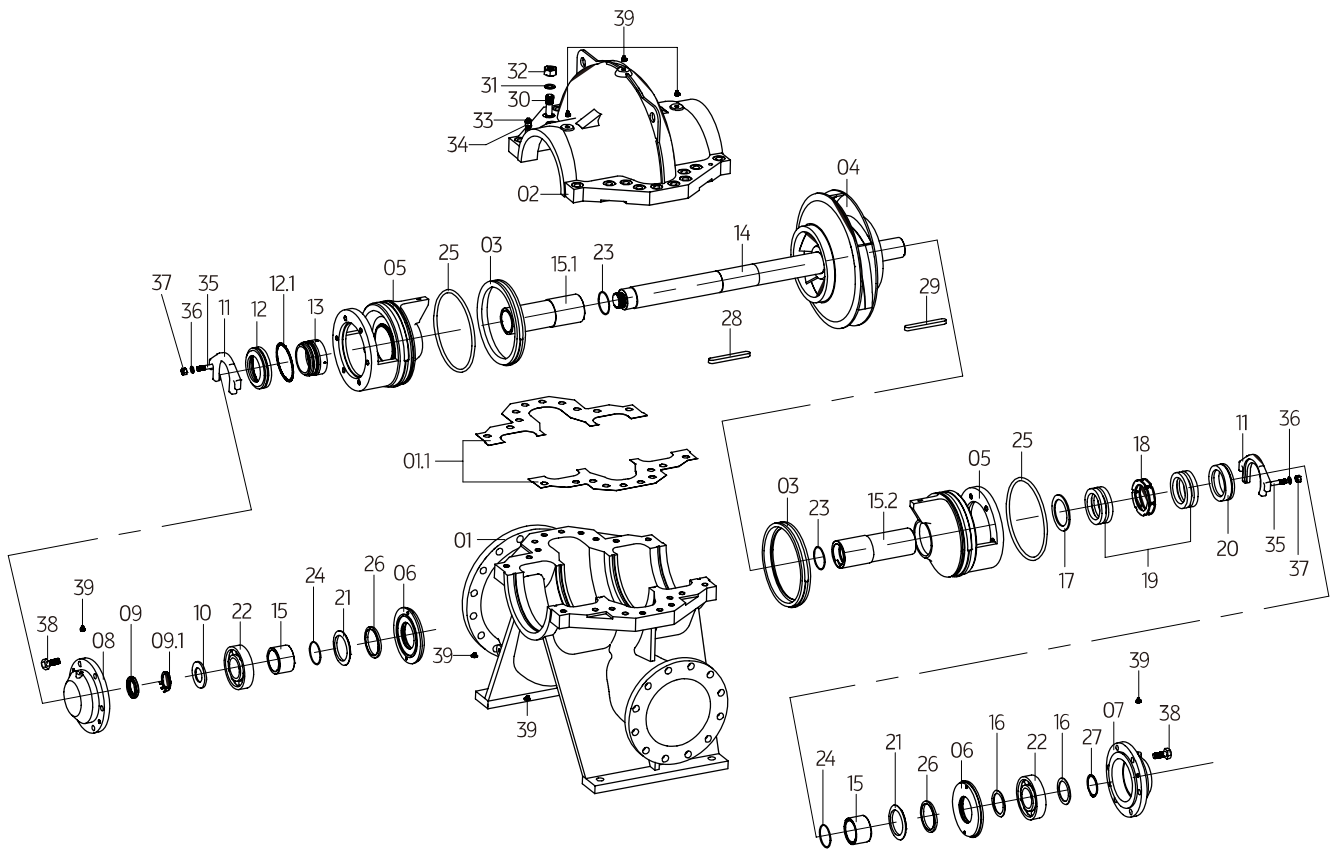
- Flow Rate(Q) : Up to 3400 m<sup>3</sup>/h
- Head(H) : Up to 190m
- Speed : 1480 rpm or 2980 rpm (50 Hz)  
1780 rpm or 3580 rpm (60Hz)

### On Request

- Pump material with fully stainless steel / ductile iron
- Special Mechanical Seal



## Exploded View & Parts List



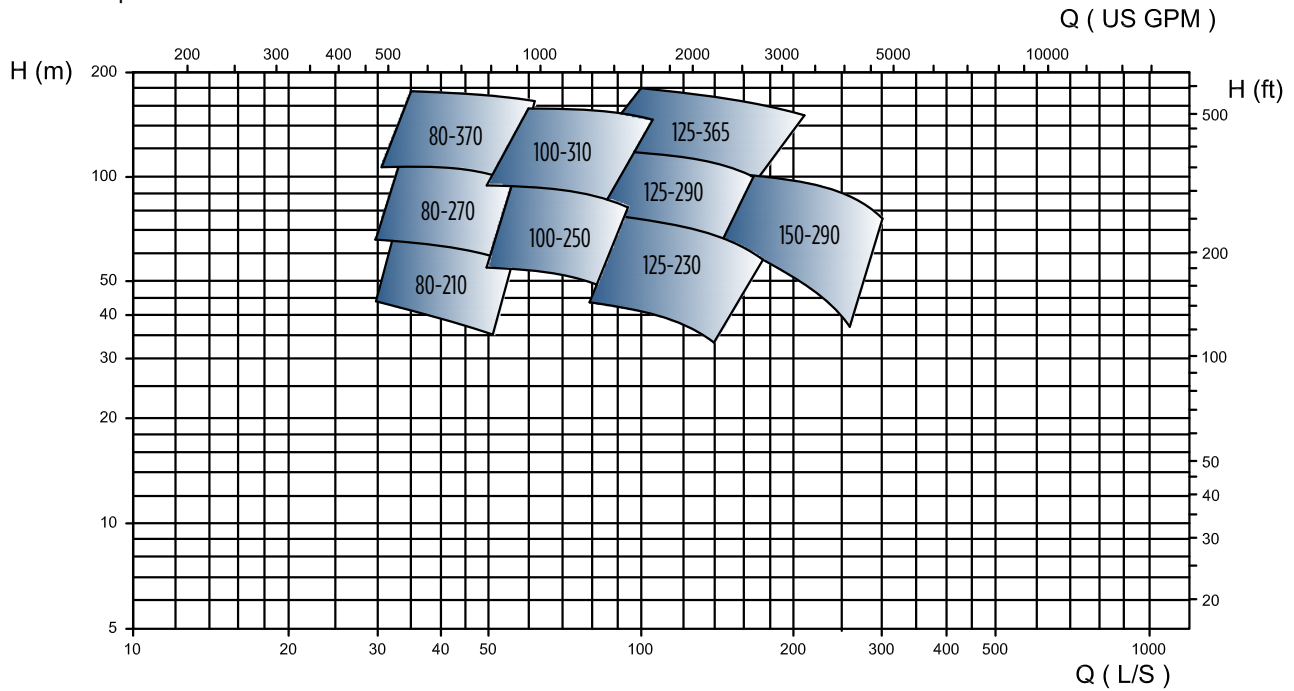
Item	Part Name
01	Casing - Bottom
01.1	Gasket
02	Casing - Top
03	Wear Ring
04	Impeller
05	Seal Frame
06	Bearing Cover
07	Bearing Frame - Drive End
08	Bearing Frame - Non Drive End
09	Screw Nut
09.1	Lock Washer for Nut
10	Bearing Slinger
11	Seal Plate
12	Seal Cover
12.1	Seal Cover Gasket

13	Mech. Seal
14	Shaft
15	Shaft Sleeve-Short
15.1	Shaft Sleeve-Short
15.2	Packing Shaft Sleeve
16	Bearing Seal Plate
17	Packing Seal Plate
18	Lantern Ring
19	Gland Packing
20	Packing Cover
21	Slinger
22	Ball Bearing
23	O-Ring
24	O-Ring
25	O-Ring

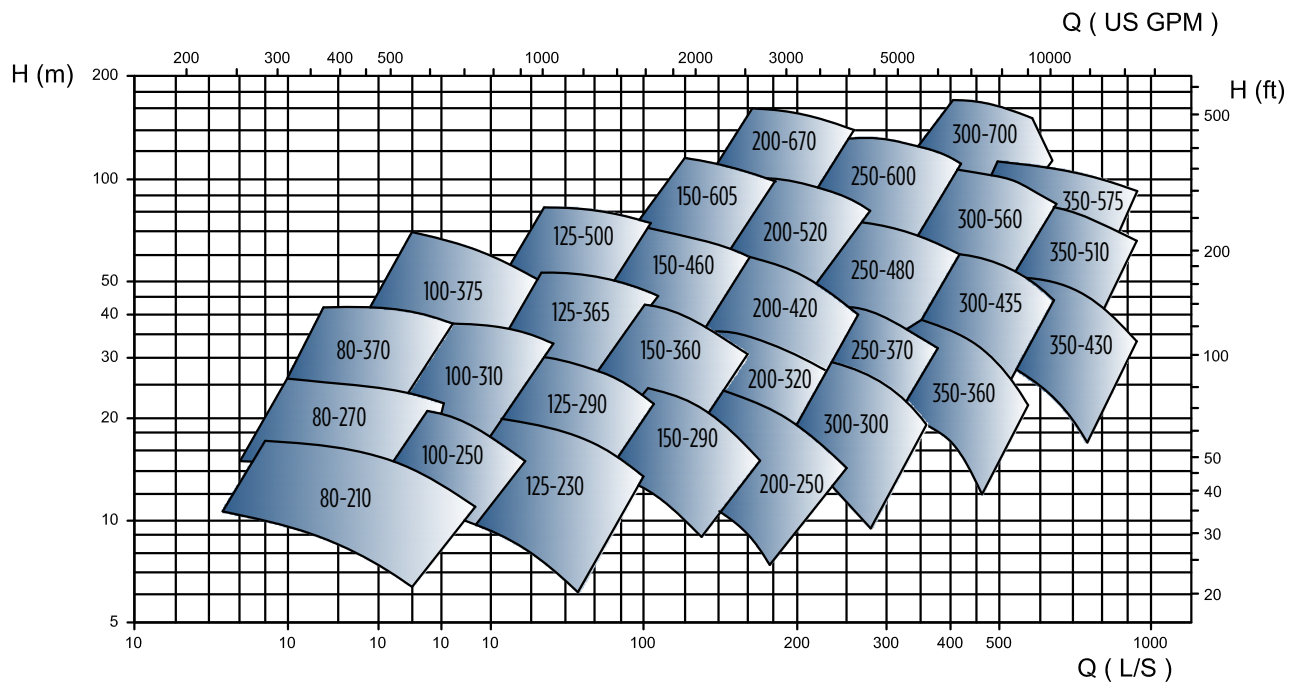
26	Felting
27	External Circle Clips
28	Key
29	Key
30	Scre Bolt
31	Spring Washer
32	Screw Nut
33	Pin
34	Screw Nut
35	Screw Bolt
36	Flst Gasket
37	Screw Nut
38	Screw Bolt
39	Plug

## FAMILY CURVE

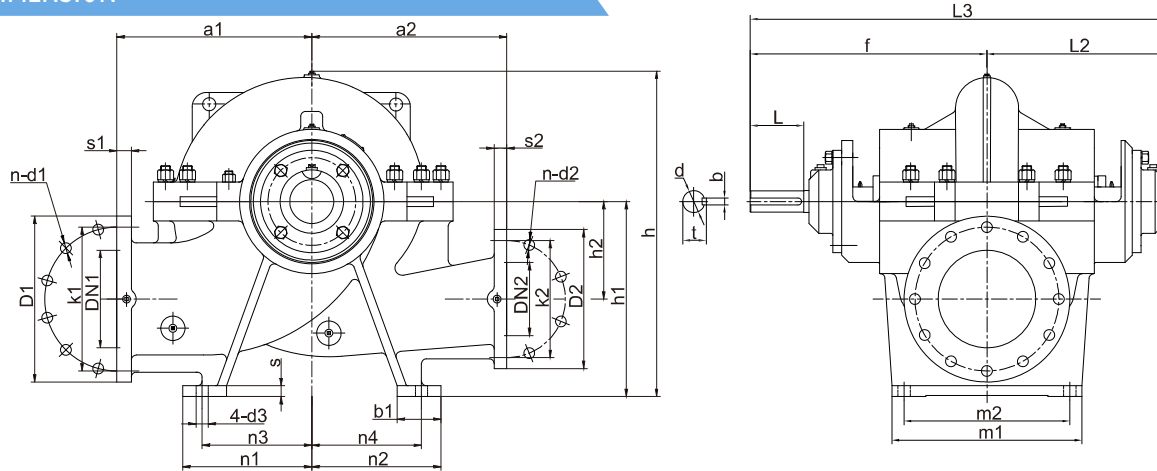
SPEED : 2980 rpm



SPEED : 1480 rpm



## DIMENSION



Model	Inlet		Outlet		Pump Dimension							Foot							Shaft				Weight kg	
	DN1	DN2	a1	a2	f	L2	L3	h	h1	h2	m1	m2	n1	n2	n3	n4	b1	d3	s	d	b	L		t
ISC 50-424	65	50	216	216	305	237	542	345	178	89	222	178	152.5	152.5	130	130	60	Ø 19	16	Ø 24	8	65	27.3	76
ISC 50-340	65	50	254	254	305	237	542	433	216	127	222	178	152.5	152.5	130	130	60	Ø 19	16	Ø 24	8	65	27.3	93
ISC 80-210	125	80	300	300	385	300	685	490	315	140	320	270	205	205	170	170	80	Ø 25	22	Ø 34	10	80	37.3	179
ISC 80-270	125	80	300	300	385	300	685	528	315	140	320	270	205	205	170	170	80	Ø 25	22	Ø 34	10	80	37.3	200
ISC 80-370	125	80	330	330	385	300	685	558	315	140	320	270	205	205	170	170	75	Ø 25	22	Ø 34	10	80	37.3	209
ISC 100-250	150	100	330	330	385	300	685	570	355	170	320	270	235	235	200	200	80	Ø 25	22	Ø 34	10	80	37.3	209
ISC 100-310	150	100	330	330	385	300	685	605	355	170	320	270	235	235	200	200	80	Ø 25	22	Ø 34	10	80	37.3	257
ISC 100-375	150	100	370	370	385	300	685	620	355	170	320	270	235	235	200	200	75	Ø 25	22	Ø 34	10	80	37.3	245
ISC 125-230	200	125	370	370	485	365	850	620	400	200	390	340	265	265	225	225	90	Ø 25	22	Ø 44	12	110	47.3	309
ISC 125-290	200	125	370	370	485	365	850	635	400	200	390	340	265	265	225	225	90	Ø 25	22	Ø 44	12	110	47.3	293
ISC 125-365	200	125	370	370	485	365	850	665	400	200	390	340	265	265	225	225	90	Ø 25	22	Ø 44	12	110	47.3	311
ISC 125-500	200	125	450	450	485	365	850	720	400	200	390	340	320	320	280	280	85	Ø 25	26	Ø 44	12	110	47.3	414
ISC 150-290	200	150	400	400	485	365	850	660	400	210	390	340	265	265	225	225	90	Ø 25	22	Ø 44	12	110	47.3	323
ISC 150-360	200	150	400	400	485	365	850	670	400	200	390	340	265	265	225	225	90	Ø 25	22	Ø 44	12	110	47.3	350
ISC 150-460	200	150	450	450	540	420	960	710	400	200	480	430	315	315	280	280	75	Ø 25	25	Ø 54	16	110	58.3	418
ISC 150-605	200	150	600	500	540	420	960	885	500	300	480	430	390	390	350	350	95	Ø 30	35	Ø 54	16	110	58.3	755
ISC 200-250	250	200	450	450	540	420	960	793	500	240	480	430	315	315	280	280	85	Ø 25	25	Ø 54	16	110	58.3	450
ISC 200-320	250	200	450	450	540	420	960	805	500	240	480	430	315	315	280	280	85	Ø 25	25	Ø 54	16	110	58.3	506
ISC 200-420	250	200	500	500	540	420	960	830	500	240	480	430	330	330	280	280	100	Ø 25	25	Ø 54	16	110	58.3	551
ISC 200-520	250	200	600	500	629	479	1108	925	560	300	490	430	400	400	350	350	100	Ø 28	28	Ø 64	18	145	68.4	700
ISC 200-670	250	200	650	550	629	479	1108	1055	600	350	500	400	400	400	350	350	110	Ø 30	35	Ø 64	18	145	68.4	1218
ISC 250-280	300	250	500	500	629	479	1108	955	600	300	480	400	400	400	350	350	100	Ø 30	28	Ø 64	18	145	68.4	550
ISC 250-370	300	250	500	500	629	479	1108	975	600	300	480	400	400	400	350	350	100	Ø 30	28	Ø 64	18	145	68.4	719
ISC 250-480	300	250	550	550	695	515	1210	985	600	330	600	520	400	400	350	350	100	Ø 30	32	Ø 74	20	170	78.9	906
ISC 250-600	300	250	650	550	695	515	1210	1060	630	350	600	520	400	400	350	350	110	Ø 30	35	Ø 74	20	170	78.9	1116
ISC 300-300	350	300	550	500	629	479	1108	1010	630	300	500	400	400	400	350	350	100	Ø 30	30	Ø 64	18	145	68.4	792
ISC 300-435	400	300	650	550	695	515	1210	1072	670	333	600	520	400	400	350	350	100	Ø 30	32	Ø 74	20	170	78.9	947
ISC 300-560	400	300	700	650	785	605	1390	1140	710	350	620	520	525	525	475	475	110	Ø 30	35	Ø 84	22	180	89.4	1301
ISC 300-700	400	300	750	650	785	605	1390	1255	750	400	620	520	530	530	475	475	120	Ø 30	40	Ø 84	22	180	89.4	1640
ISC 350-360	400	350	650	550	695	515	1210	1100	670	350	600	520	400	400	350	350	100	Ø 30	32	Ø 74	20	170	78.9	1077
ISC 350-430	450	350	750	650	785	605	1390	1200	750	400	600	520	530	530	475	475	120	Ø 30	35	Ø 84	22	180	89.4	1445
ISC 350-510	400	350	700	650	785	605	1390	1200	750	400	620	520	525	525	475	475	110	Ø 30	40	Ø 84	22	180	89.4	1456
ISC 350-575	400	350	750	750	853	667	1520	1400	900	420	780	630	560	560	485	485	150	Ø 35	35	Ø 95	25	210	100.4	1900
ISC 400-525	500	400	750	700	968	747	1715	1410	900	475	890	740	560	560	485	485	150	Ø 35	35	Ø 105	28	210	111.4	1600
ISC 400-665	500	400	1000	750	968	747	1715	1550	1000	525	890	740	560	560	485	485	150	Ø 35	35	Ø 105	28	210	111.4	2000

Flange Dimensions (DIN 2501 PN 16)

DN1/DN2	80	100	125	150	200	250	300	350	400	450	500	600	700
K1/K2	160	180	210	240	295	355	410	470	525	585	650	770	840
D1/D2	200	220	250	285	340	405	460	520	580	640	715	840	910
S1/S2	22	24	26	26	30	32	34	38	40	40	46	54	54
n-d1/n-d2	8-Ø 17.5	8-Ø 17.5	8-Ø 17.5	8-Ø 22	12-Ø 22	12-Ø 26	12-Ø 26	16-Ø 26	16-Ø 30	20-Ø 30	20-Ø 33	20-Ø 36	24-Ø 36



## Franklin Electric

**Franklin Electric (SEA) Pte Ltd**  
17 changi business Park Central 1  
#06-05 Honeywell Building  
Singapore 486073, SINGAPORE  
Tel : +65 6789 6865  
Fax : +65 6789 0155  
Email : fesea@fele.com

Franklin Electric (SEA) Pte Ltd reserves the right to amend specification without prior notice