

# **FPS**



## **50 Hz 32STS SERIES** Submersible Turbine Pumps



**Franklin Electric**

[franklinwater.com](http://franklinwater.com)



## FEATURES

- Premium ductile iron casting for longer life and higher pressures
- Longer discharge and motor bracket bearings for increased pump life
- Spiral cutlass rubber intermediate bearings designed for harsh environments
- 416 stainless steel pump shaft ground and polished for maximum durability
- Investment cast stainless steel impellers for maximum abrasion resistance
- Custom pumps available

## SPECIFICATIONS

- 6" 32 m<sup>3</sup>/h

## MODEL NO. EXPLANATION

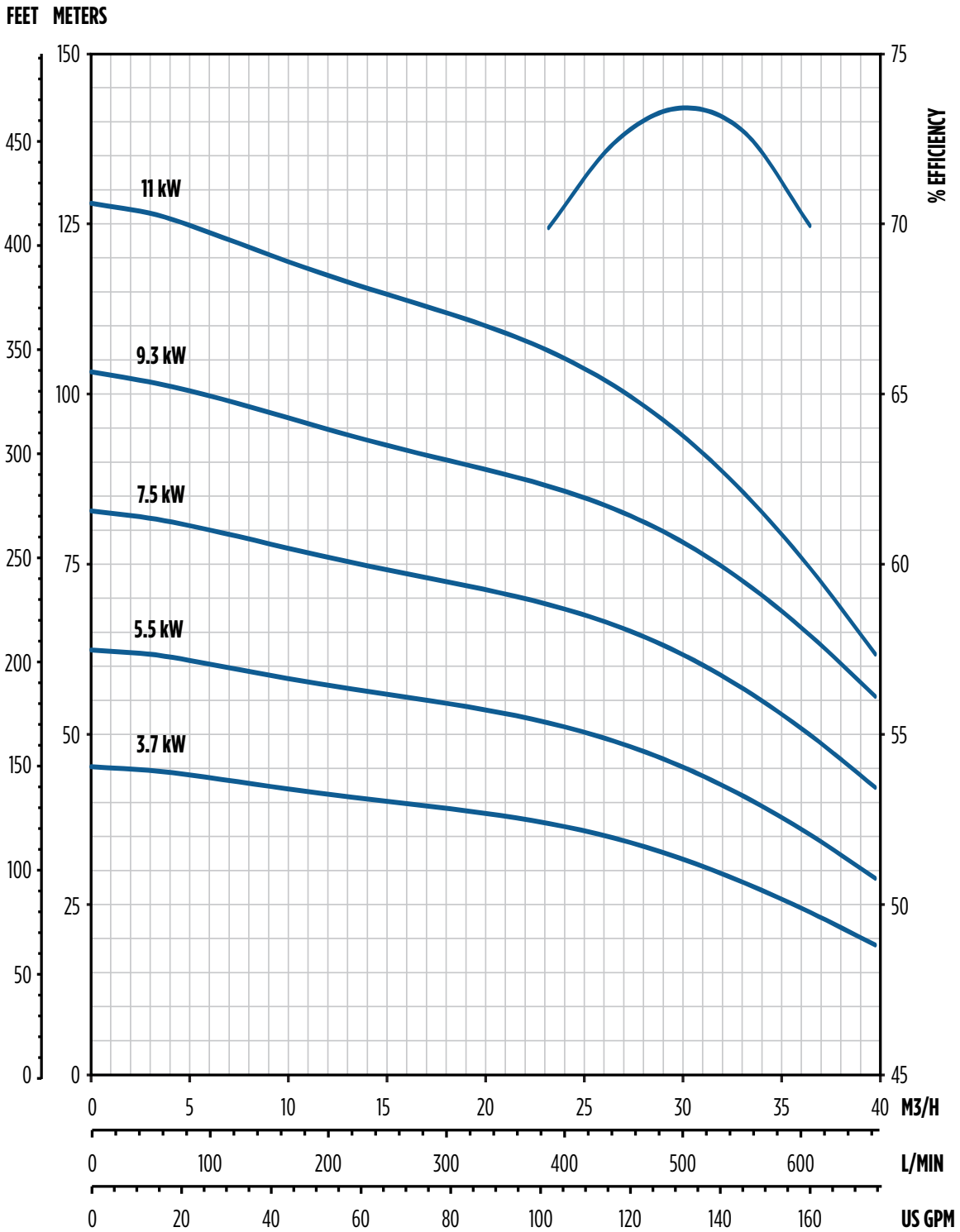
Example: 32STS9D6X-0764

- 32 = Flow series m<sup>3</sup>/h
- STS = Series (Sub Turbine)
- 9 = Motor kW (9.3)
- D = Ductile iron
- 6 = Pump diameter (6")
- X = Impeller trim configuration
- 07 = Number of stages
- 6 = Motor size (6")
- 4 = Discharge size (4")

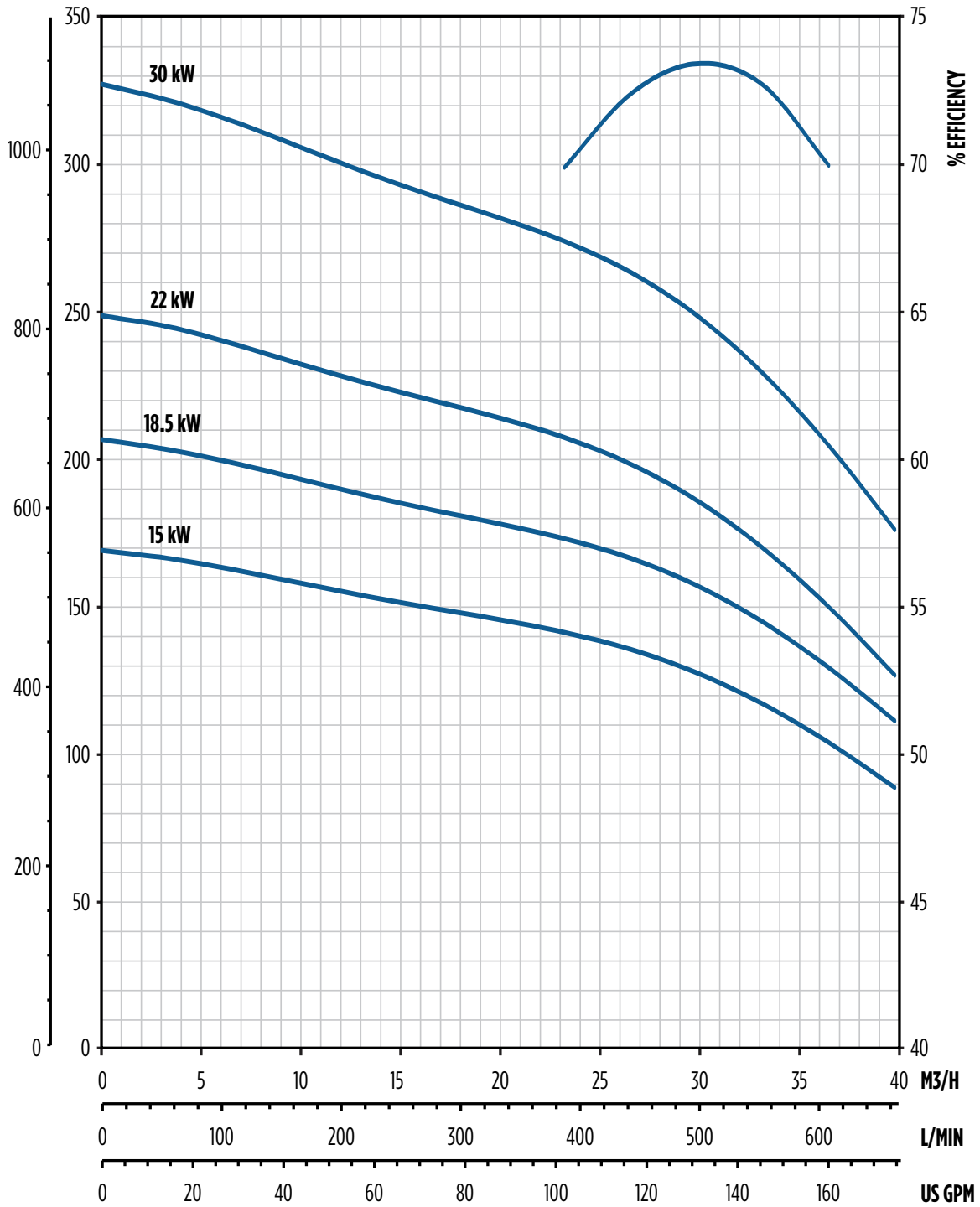


# 50 Hz 32STS SERIES Submersible Turbine Pumps

PERFORMANCE - 6" 32 M<sup>3</sup>/H



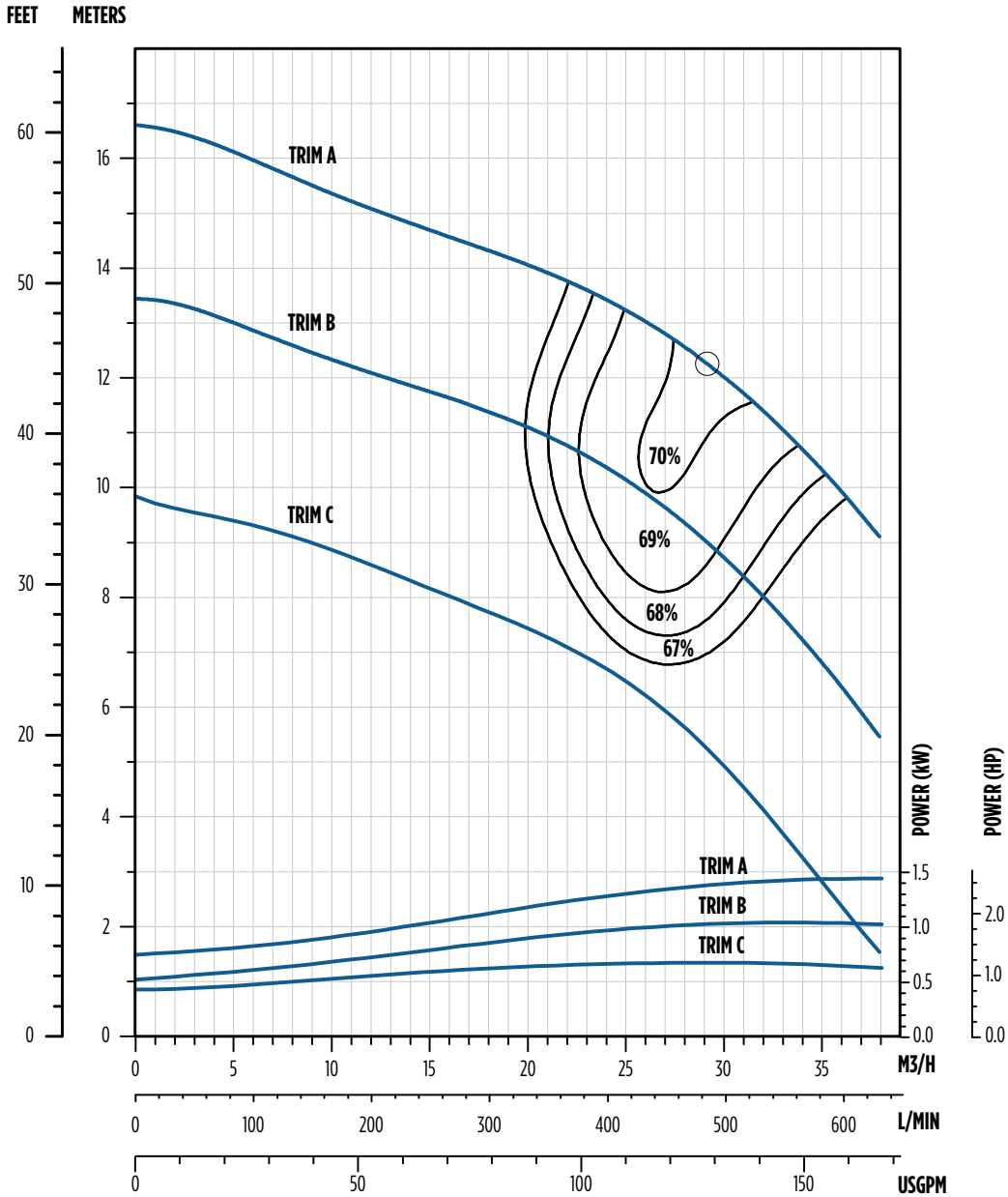
Note: Performance based on 68 °F / 20 °C fresh water, 6" motor at 2850 rpm

**FEET METERS**


*Note: Performance based on 68 °F / 20 °C fresh water, 6" motor at 2850 rpm*

# 50 Hz 32STS SERIES Submersible Turbine Pumps

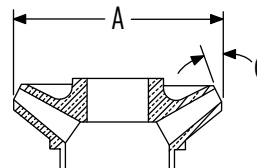
SINGLE-STAGE PERFORMANCE - 6" 32 M<sup>3</sup>/H



Note: Efficiencies are typical, not guaranteed. Efficiency correction required for low stage count (1 stage - 3%, 2 stage - 1%, 3 stage - 0%)  
 Bowl #9 begins transition to double-bolted (8 bolts @ bottom, 14 bolts @ top)  
 Nominal rpm: 2850

## IMPELLER SPECS

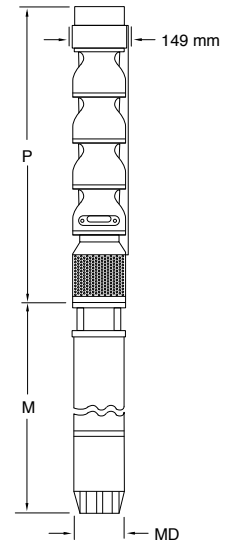
Trim	Diameter [mm]	C Angle
A	119.08	20 °
B	107.95	20 °
C	95.25	20 °



## DIMENSIONS

M <sup>3</sup> /H	kW	Stages	Trim	Motor	P	M*	MD*	Motor Wt.	Pump Wt.
					mm	mm	mm	kg	kg
32	3.7	3	1A, 2B	6"	767	582	137	37.5	34.5
	5.5	4	2A, 2B		888	615		41.1	39.9
	7.5	5	4A, 1B		1009	645		45.2	45.8
	9.3	6	6A		1129	679		47.5	51.3
	11	8	5A, 3B		1371	711		50.9	62.1
	15	10	9A, 1B		1612	777		56.7	73.5
	18.5	12	12A		1853	841		63.3	84.4
	22	15	12A, 3B		2215	907		69.3	101.2
	30	19	19A		2698	1036		83.9	123.4

Note: \*MD diameter = Franklin Electric motor, M = Maximum length of Franklin Electric motor



## ORDERING

M <sup>3</sup> /H	kW	Stages	Trim	Motor	Discharge	Order No.	Model No.	Ship Wt. [kg]
32	3.7	3	1A, 2B	6"	4" BSPP	97060032103	32STS3D6X-0364	40.8
	5.5	4	2A, 2B			97060032104	32STS5D6X-0464	46.3
	7.5	5	4A, 1B			97060032105	32STS7D6X-0564	53.1
	9.3	6	6A			97060032106	32STS9D6A-0664	59.5
	11	8	5A, 3B			97060032108	32STS11D6X-0864	70.3
	15	10	9A, 1B			97060032110	32STS15D6X-1064	94.3
	18.5	12	12A			97060032112	32STS18D6A-1264	109.8
	22	15	12A, 3B			97060032115	32STS22D6X-1564	130.6
	30	19	19A			97060032119	32STS30D6A-1964	155.6

## SPECS

Minimum Well I.D.	6"
Minimum Submergence Above Inlet	3 meters
Discharge	4" BSPP
Maximum Working Pressure	Standard: 24.1 bar - Double Bolted: 46.5 bar

Note: Refer to Franklin Electric AIM data for motor cooling requirements.

## MATERIALS

Part	Material	Specification No.
Discharge Bracket	Ductile Iron	ASTM A536 65-45-12
Top Bowl	Ductile Iron	ASTM A536 65-45-12
Intermediate Bowl	Ductile Iron	ASTM A536 65-45-12
Bearings, Discharge / Suction	Bronze	ASTM B584 C89835
Impeller	304 Stainless Steel	ASTM A743/A743M CF8
Pump Shaft	416 Stainless Steel	ASTM A582 S41600
Suction Bracket	Ductile Iron	ASTM A536 65-45-12
Bowl Bearing	Rubber	Rubber
Sand Collar	300 Stainless Steel	ASTM A666
Suction Screen	302 Stainless Steel	ASTM A240 S30200
Cable Guard	300 Stainless Steel	ASTM A666
Shaft Coupling	416 Stainless Steel	ASTM A582 S41600
Upthrust Bolt	300 Stainless Steel	ASTM A666
Taper Lock	416 Stainless Steel	ASTM A582 S41600
Bolting	300 Stainless Steel	ASTM A666

Note: Bowl bearing and shaft options available. Contact customer service for available options.

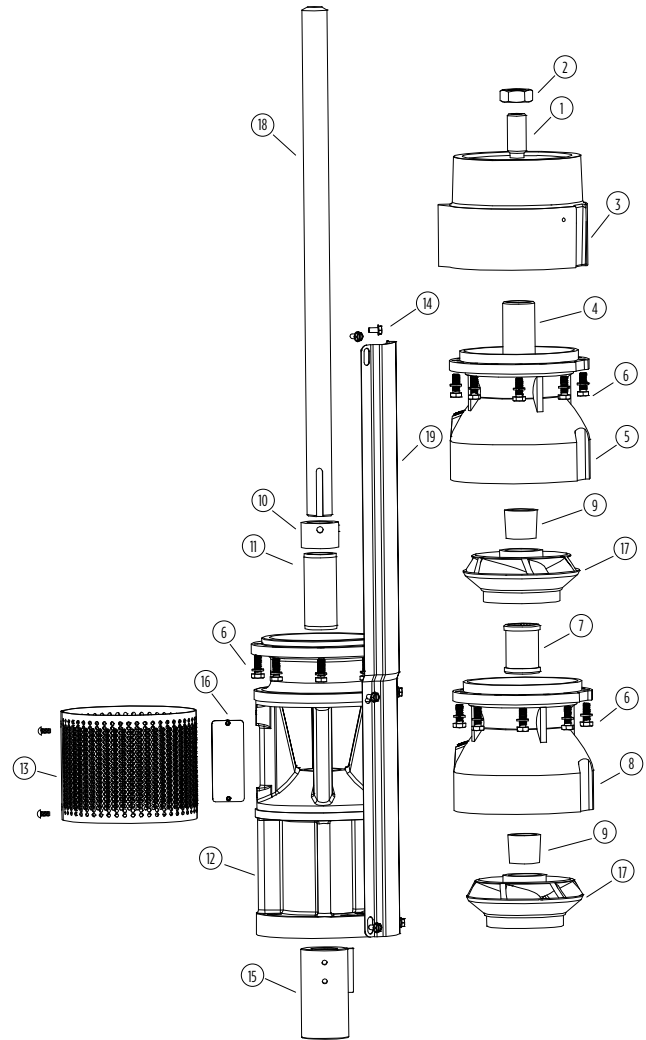
# 50 Hz 32STS SERIES Submersible Turbine Pumps

EXPLODED PARTS - 6" 32 M<sup>3</sup>/H

## REPAIR PARTS

Item No.	Description	Part No.	Qty.
1, 2	Upthrust bolt/nut kit	305471553	1
3	Discharge 4" BSPP (no top bearing)	305471450	1
4	Top bearing - bronze (incl. in 5) (20 m <sup>3</sup> /h only)	305471386	As Req.
5	Top bowl w/ bronze top bearing	305471517	As Req.
	Top bowl w/ bronze top bearing XP	305471518	
6	Bowl bolt kit (8 pcs.)*	305471548	As Req.
	Bowl bolt kit (1000 pcs.)	305471550	
7	Bowl bearing - bronze (incl. in 8) (20 m <sup>3</sup> /h only)	305471388	As Req.
	Bowl bearing - rubber (incl. in 8) (20 m <sup>3</sup> /h only)	305471395	
	Bowl bearing - Viton (incl. in 8) (20 m <sup>3</sup> /h only)	305471396	
8	Bowl and bearing assembly - bronze	305471479	As Req.
	Bowl and bearing assembly XP - bronze	305471483	
	Bowl and bearing assembly - rubber	305471477	
	Bowl and bearing assembly XP - rubber	305471481	
	Bowl and bearing assembly - Viton	305471480	
9	Taper lock collet kit (incl. in 10)	305471372	As Req.
10	Sand cap w/ set screws	305471374	1
11	Motor bracket bearing - bronze (incl. in 14)	305471389	As Req.
	Motor bracket bearing - rubber (incl. in 14)	305471395	
	Motor bracket bearing - Viton (incl. in 14)	305471396	
12	6" motor bracket w/ bronze bearing	305471424	1
	6" motor bracket w/ rubber bearing	305471417	
	6" motor bracket w/ Viton bearing	305471418	
13	6" suction screen w/ screws	305471377	1
14	Cable guard screw kit (8 pcs.)	305471000	1
15	6" coupling	305471402	1
-	6" motor bolt kit	305352901	1
16	Nameplate w/ drive screws	305418901	1
-	Owner's manual	106089101	1

\*Pumps of 9 stages or more require double bolting. Two bolt kits (305471548) per stage will be required for the 9th stage and above.



## IMPELLER

Item No.	Description	Diameter [mm]	Angle [Degrees]	Kit w/ Collet
17	A Trim	119.08	20	305471560
	B Trim	107.95	20	305471561
	C Trim	95.25	20	305471562

Note: Shaft and cable guard information located on the next page.

## 416 SS SHAFT\*

Part No.	Length [mm]
305471363	1219
305471364	1829
305471365	2438
305471366	3048

\*Double ended



## SHAFT

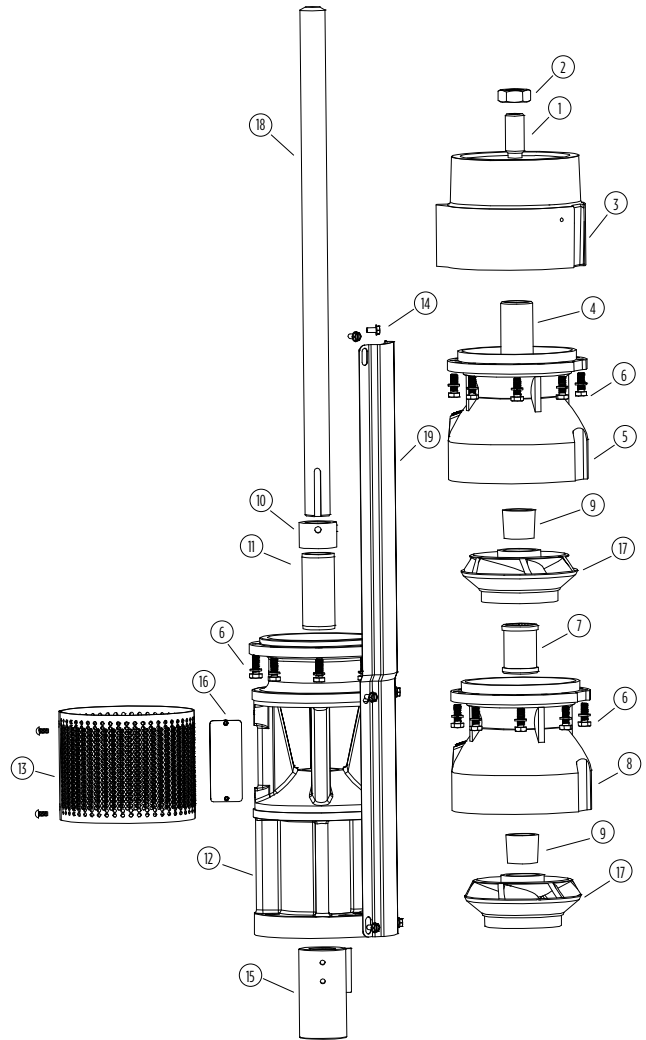
Item No.	Stages	Length [mm]	Part No.	
			416 SS	Chrome
18	1	395	305471302	305471345
	2	516	305471303	305471346
	3	637	305471304	305471347
	4	757	305471305	305471348
	5	878	305471306	305471349
	6	998	305471307	305471350
	7	1119	305471308	305471351
	8	1240	305471309	305471352
	9	1360	305471310	305471353
	10	1481	305471311	305471354
	11	1602	305471312	305471355
	12	1722	305471313	305471356
	13	1843	305471314	305471357
	14	1964	305471295	305471338
	15	2084	305471315	305471358
	16	2200	305471316	305471359
	17	2326	305471317	305471360
	18	2446	305471318	305471361
	19	2567	305471319	305471362

## CABLE GUARD (PRE-CUT)

Item No.	Stages	Length [mm]	Part No.
19	1	473	305471121
	2	594	305471122
	3	714	305471123
	4	835	305471124
	5	956	305471125
	6	1076	305471126
	7	1197	305471127
	8	1318	305471128
	9	1438	305471129
	10	1559	305471130
	11	1679	305471131
	12	1800	305471132
	13	1921	305471133
	14	2042	305471119
	15	2162	305471134
	16	2283	305471135
	17	2403	305471136
	18	2524	305471137
	19	2645	305471138

## CABLE GUARD (BULK)

Item No.	Stages	Length [mm]	Part No.
19	-	3048	305471100







**ASEAN**

Franklin Electric (SEA) Pte. Ltd.  
17 Changi Business Park Central 1  
# 06-05, Honeywell Building  
Singapore 486 073

Phone: +65.6789.6865

Fax: +65.6789.0155

**CHINA**

Franklin Electric (Shanghai) Co. Ltd.  
Unit 1002-03, Shanghai Central Plaza  
No. 227, Huang Pi Bei Road  
Shanghai 200003, China

Phone: +86.21.6327.0909

Fax: +86.21.6327.0910

**INDIA**

Franklin Electric India Pvt. Ltd.  
21, Alindra , GIDC - Manjusr,  
Post Lamdapura , Savli - 391 775,  
Dist Vadodara – 390010 (GUJARAT)

Phone: +02667-268600/01

**KOREA**

Franklin Electric B.V. Korea  
Room 502 (BangBaeDong, BangBae The O Superium#1)  
3-4 SeoCho-Daero  
SeoCho-Gu, Seoul 137-974  
Republic of Korea

Phone: +82.2.3473.3353

Fax: +82.2.3473.3352

**AUSTRALIA / NEW ZEALAND**

Franklin Electric (Australia) Pty. Ltd.  
106 - 110 Micro Circuit  
Dandenong South, Victoria 3175  
Australia

Phone: +61.3.9799.5000

Fax: +61.3.9799.5050

Hotline: 1.300 FRANKLIN (1.300.372.655)

**JAPAN**

Franklin Electric International, Inc.  
Aoba Bldg. 4F  
1-14-7, Sugamo  
Toshima-Ku, Tokyo 170-0002, Japan

Phone: +81.3.5319.1251

Fax: +81.3.5319.1252

**LATIN AMERICA**

Motores Franklin S.A. de C.V.  
Avenida Churubusco #1600  
(Bodega #16)  
Col. Francisco I. Madero  
Monterrey, N.L.  
Mexico C.P. 64560

Phone: +52.81.8000.1000

Fax: +52.818.864.8445

**UNITED STATES**

Franklin Electric Co., Inc.  
9255 Coverdale Road  
Fort Wayne, Indiana 46809 USA

Phone: +1.260.824.2900

Fax: +1.260.824.2909