

# FRANKLIN AID



Franklin Electric



Franklin Application/Installation Data *Europe*

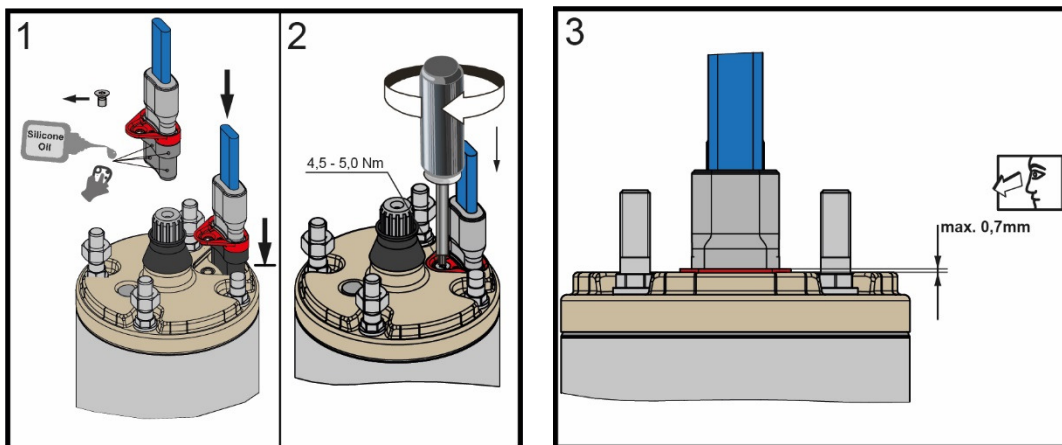
No.2 /2016

Following many requests from the field this edition of the Franklin AID will deal with the correct assembly of the motor lead to the encapsulated Franklin Electric submersible motor.

## Assembly of motor lead

1. Assemble the lead to the motor prior to mounting the pump.
2. Check for any apparent damage on the lead insulation, the connector as well as the motor socket. Do not use damaged parts such as defective insulation or bent contacts. The electrical connection parts of lead, motor and sealing surface of the lead must be clean and dry.
3. Lubricate the rubber part of the connector with food-grade silicone oil for easy assembly.
4. Align the lead connector to the motor socket. Make sure the weight of the lead does not apply any side force to the connector (risk of misalignment).
5. Having positioned the bushing in the motor end bell, gently insert the lead by moving it slightly from side to side and push down to hard stop.
6. Make sure the connector has been pushed all the way down in the receptacle, before attempting to fix the securing clamp.
7. Insert the lead screw and then turning it right, tighten hand tight.
8. Tighten the screw to 4,5-5 Nm.
9. Measure cable clamp height position to upper end bell cover, height max.  $\leq 0,7$  mm.
10. See tutorial on Franklin Electric Europe YouTube Channel  
<https://www.youtube.com/watch?v=tHFNfUByT3s>
11. Check the insulation resistance according to installation manual.

**Attention: Incorrect lead assembly can lead to danger to life or material damage due to electric shock.**



YouTube  
Channel